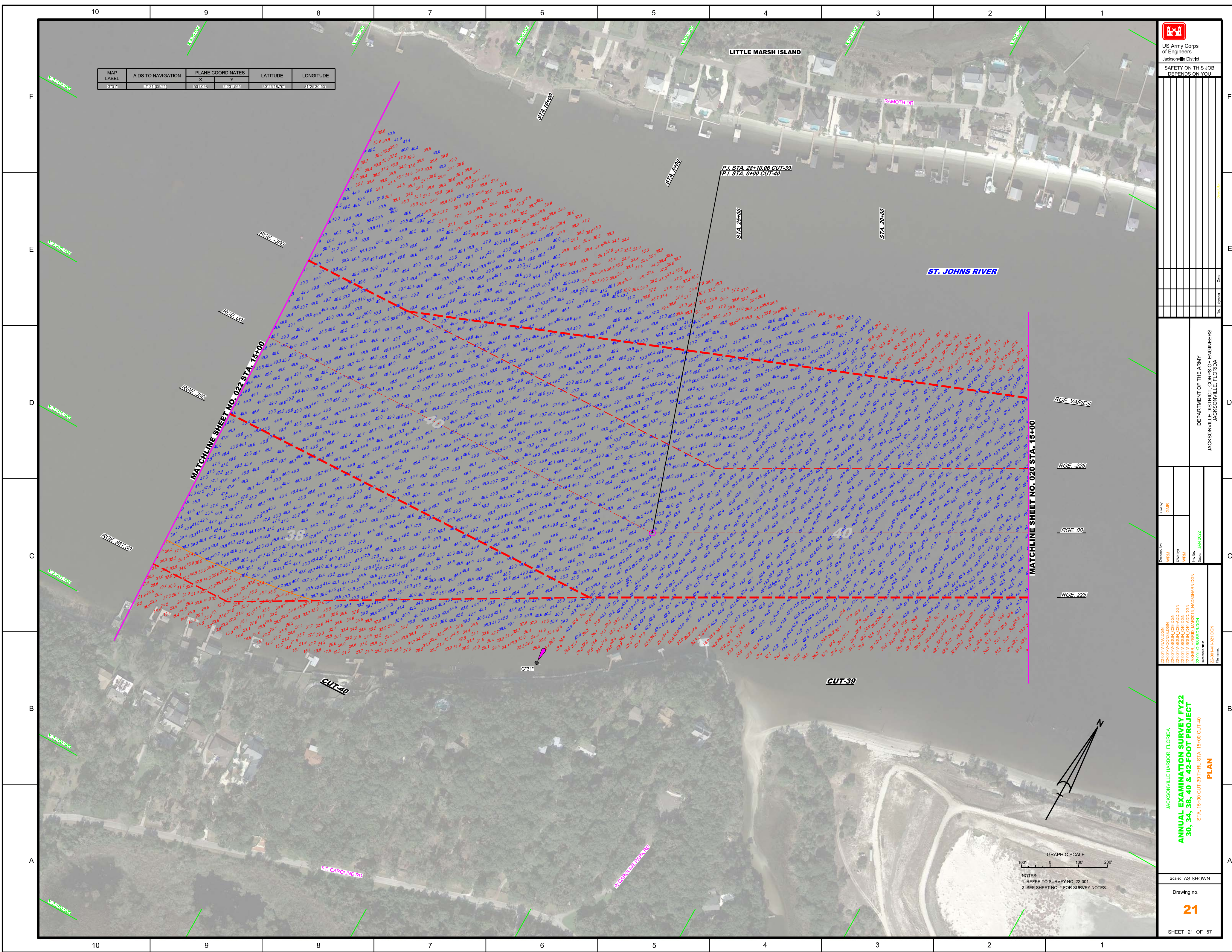


10 9 8 7 6 5 4 3 2 1

MAP LABEL	AIDS TO NAVIGATION	PLANE COORDINATES		LATITUDE	LONGITUDE
		X	Y		
G31*	L-51 (09-21)	501095	2301535	30°28'37.0"	81°29'05.3"

US Army Corps of Engineers  
Jacksonville District  
**SAFETY ON THIS JOB  
DEPENDS ON YOU**



Scale	AS SHOWN
Drawing no.	<b>21</b>
SHEET	21 OF 57

DEPARTMENT OF THE ARMY  
JACKSONVILLE DISTRICT, CORPS OF ENGINEERS  
JACKSONVILLE, FLORIDA

Designed by:	WRM	Checked:	JAN 2022
Drawn by:	GHR	Date:	

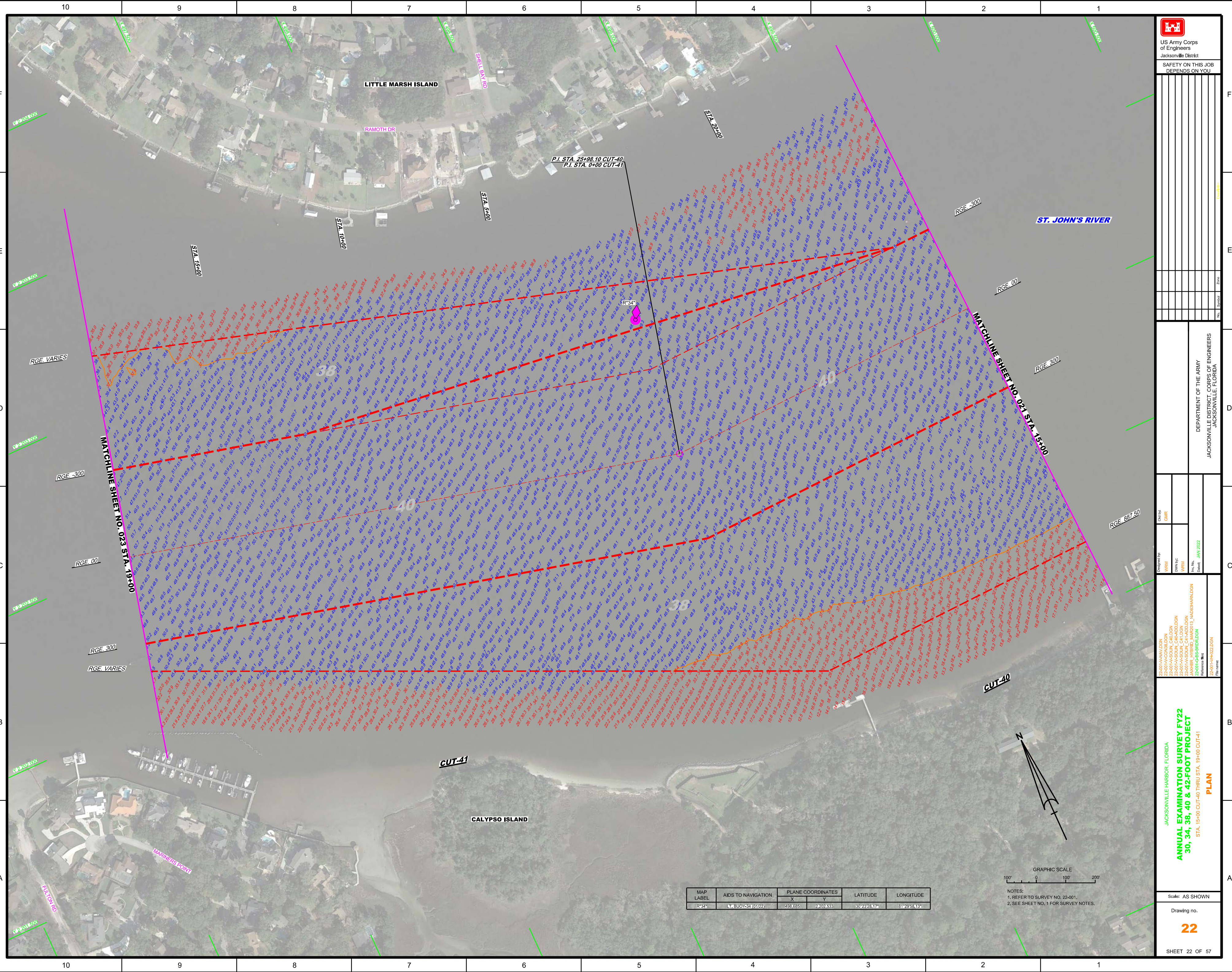
- 22-001-NAV-DGN
- 22-001-CON-DGN
- 22-001-A-SOUL-CB-ADD-DGN
- 22-001-A-SOUL-CAL-DGN
- 22-001-A-SOUL-CAD-DGN
- 22-001-A-SOUL-CAD-DGN
- 22-001-GBS-BR-DGN
- 22-001-HARZ-DGN

JACKSONVILLE HARBOR, FLORIDA  
**ANNUAL EXAMINATION SURVEY FY22  
30, 34, 38, 40 & 42-FOOT PROJECT**  
STA. 15+00 CUT-39 THRU STA. 15+00 CUT-40  
**PLAN**

NOTES:  
1. REFER TO SURVEY NO. 22-001.  
2. SEE SHEET NO. 1 FOR SURVEY NOTES.

Scale: AS SHOWN  
Drawing no. **21**  
SHEET 21 OF 57





Checked By:	GHK
Designed By:	WRM
Drawn By:	WRM
Field Date:	JAN 2022
Reference Map:	22-001-HAVAZL2DN
File Name:	22-001-HAVAZL2DN

JACKSONVILLE HARBOR, FLORIDA  
**ANNUAL EXAMINATION SURVEY FY22**  
**30, 34, 38, 40 & 42-FOOT PROJECT**  
 STA. 15+00 CUT-40 THRU STA. 19+00 CUT-41  
**PLAN**

MAP LABEL	AIDS TO NAVIGATION	PLANE COORDINATES	LATITUDE	LONGITUDE
R-34	1. BUOY-34 (01/22)	486.685 2202.533	30°23'28.17"	81°29'58.13"

GRAPHIC SCALE  
 100' 0 100' 200'  
 NOTES:  
 1. REFER TO SURVEY NO. 22-001.  
 2. SEE SHEET NO. 1 FOR SURVEY NOTES.



MAP LABEL	AIDS TO NAVIGATION	PLANE COORDINATES		LATITUDE	LONGITUDE
		X	Y		
G-65	BUOY 35 (0122)	45655	220213	30°23'27.2"	81°02'12.5"
R-34	CGR 101 (22)	45656	220226	30°23'30.0"	81°02'33.2"
G-67	BUOY 37 (0122)	45656	220231	30°23'29.2"	81°02'33.2"

**US Army Corps of Engineers**  
Jacksonville District

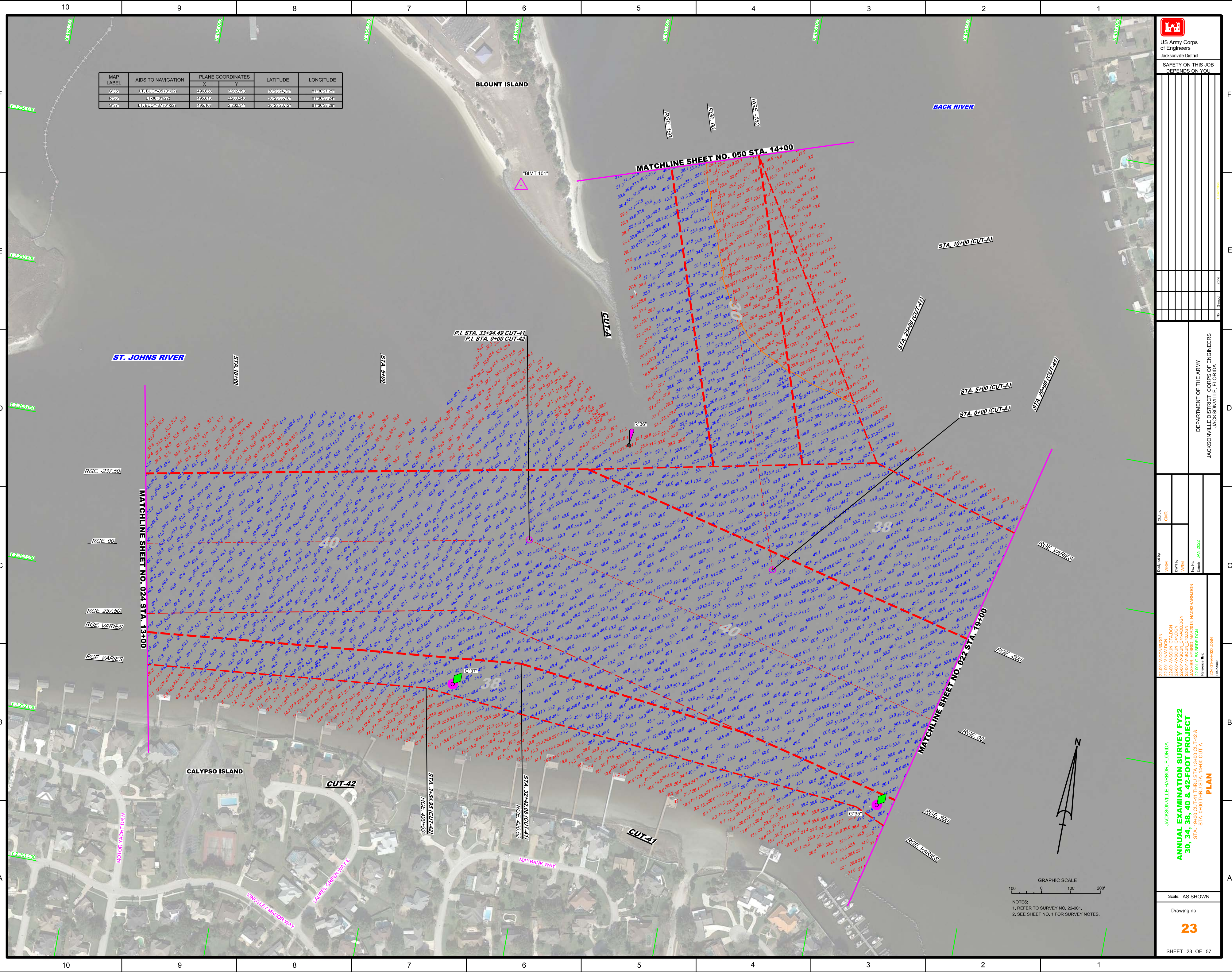
**SAFETY ON THIS JOB DEPENDS ON YOU**

DEPARTMENT OF THE ARMY  
JACKSONVILLE DISTRICT, CORPS OF ENGINEERS  
JACKSONVILLE, FLORIDA

Scale: AS SHOWN

Drawing no. **23**

SHEET 23 OF 57



ANNUAL EXAMINATION SURVEY FY22  
30, 34, 38, 40 & 42-FOOT PROJECT  
STA. 19+00 CUT-41 THRU STA 13+00 CUT-42 & STA. 0+00 THRU STA. 14+00 CUT-4

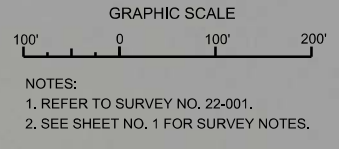
PLAN

Scale: AS SHOWN

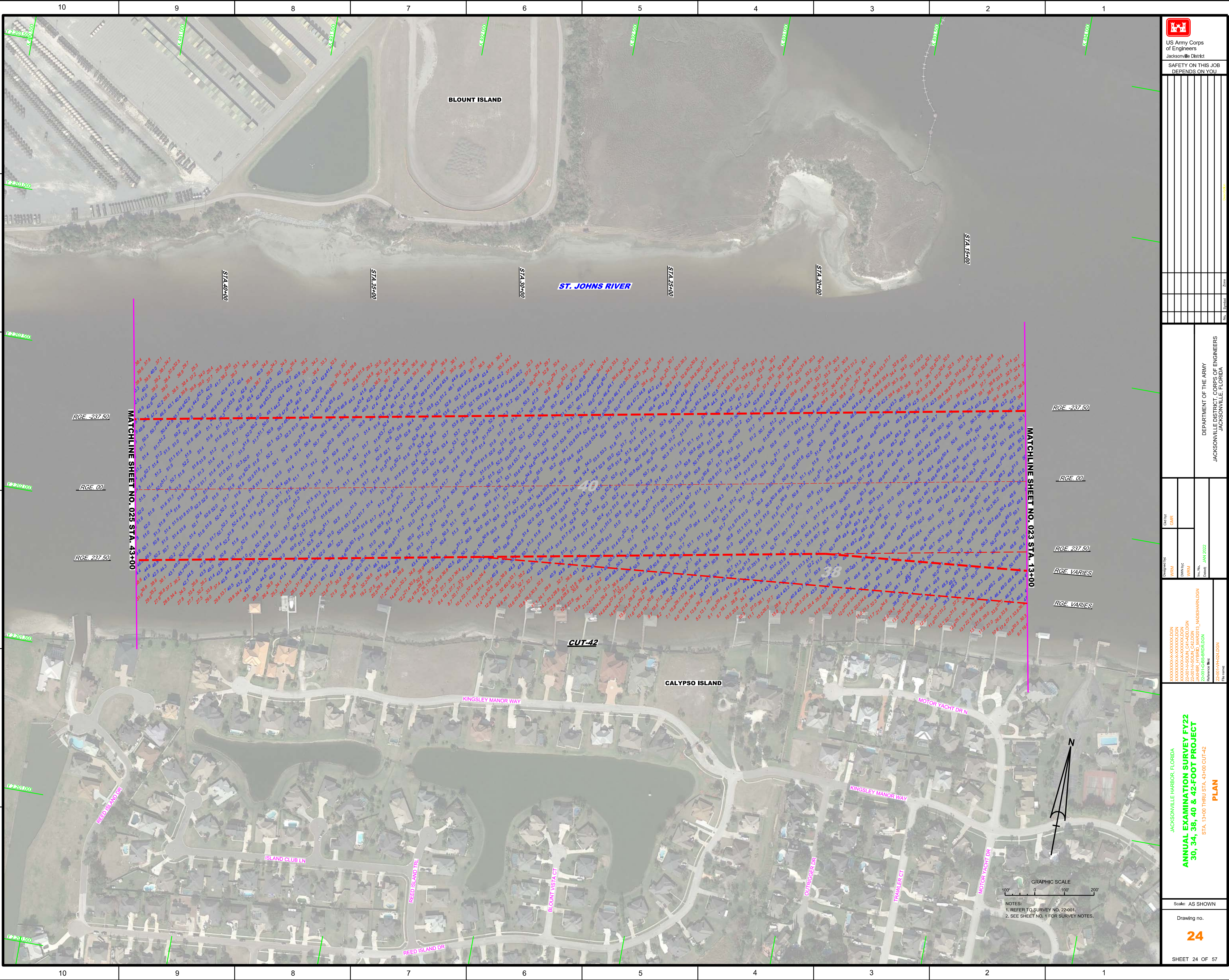
Drawing no. **23**

SHEET 23 OF 57

MAP LABEL	AIDS TO NAVIGATION	PLANE COORDINATES		LATITUDE	LONGITUDE
		X	Y		
G-65	BUOY 35 (0122)	45655	220213	30°23'27.2"	81°02'12.5"
R-34	CGR 101 (22)	45656	220226	30°23'30.0"	81°02'33.2"
G-67	BUOY 37 (0122)	45656	220231	30°23'29.2"	81°02'33.2"







Checked By:	GHK
Designed By:	WRM
Drawn By:	WRM
Field No.:	2-001-65-SR-03
Date:	JAN 2022

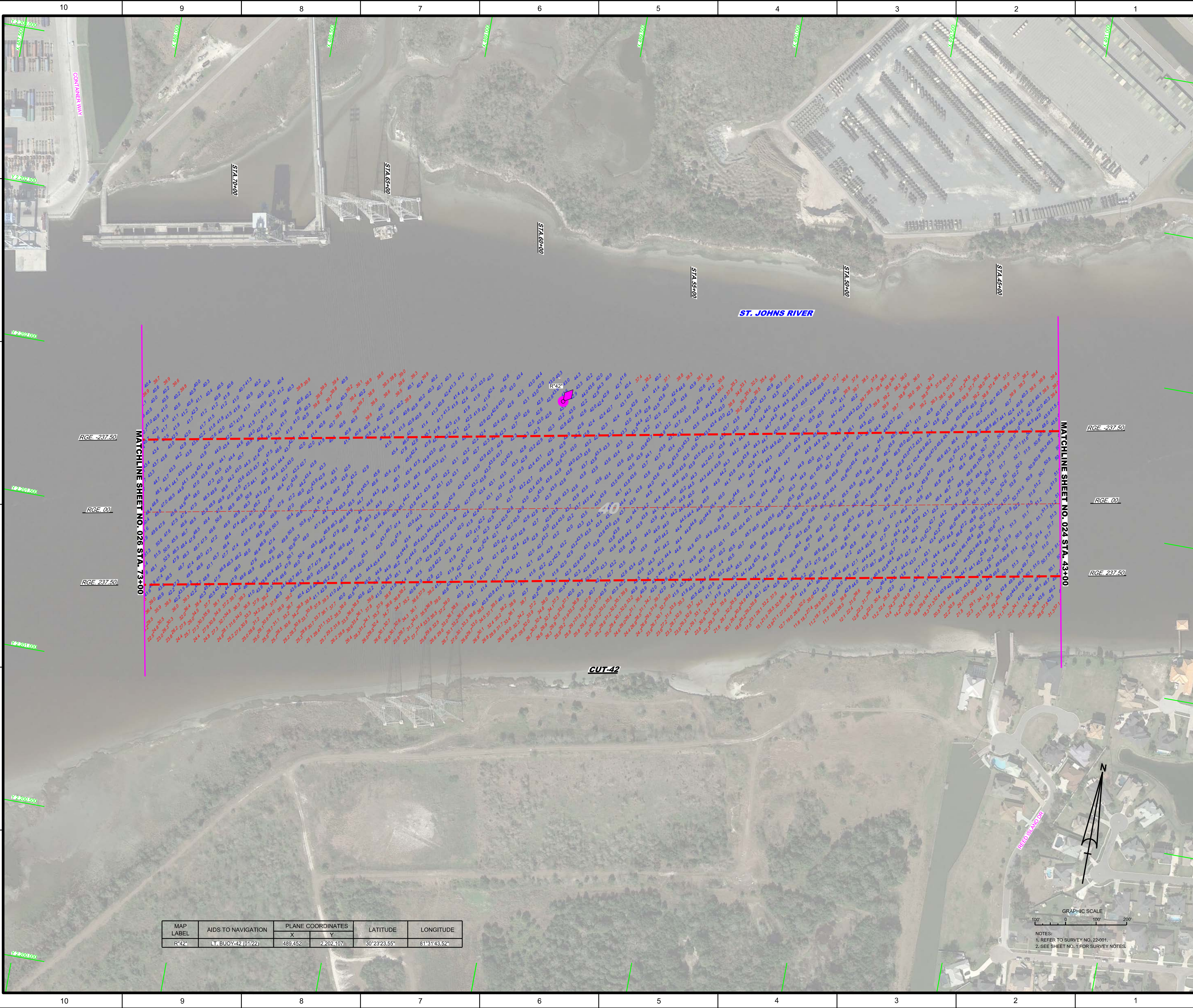
JACKSONVILLE HARBOR, FLORIDA  
**ANNUAL EXAMINATION SURVEY FY22  
30, 34, 38, 40 & 42-FOOT PROJECT**  
STA. 13+00 THRU STA. 43+00 CUT-42  
**PLAN**

Scale: AS SHOWN  
Drawing no. **24**  
SHEET 24 OF 57

GRAPHIC SCALE  
0 100' 200'

NOTES:  
1. REFER TO SURVEY NO. 22-001.  
2. SEE SHEET NO. 1 FOR SURVEY NOTES.





MAP LABEL	AIDS TO NAVIGATION	PLANE COORDINATES		LATITUDE	LONGITUDE
		X	Y		
R42*	LT. BUOY 42 (01/22)	489.452	2.202.107	30°23'23.55"	81°31'43.52"



NOTES:  
 1. REFER TO SURVEY NO. 22-001.  
 2. SEE SHEET NO. 1 FOR SURVEY NOTES.

**US Army Corps of Engineers**  
 Jacksonville District

**SAFETY ON THIS JOB DEPENDS ON YOU**

---

DEPARTMENT OF THE ARMY  
 JACKSONVILLE DISTRICT, CORPS OF ENGINEERS  
 JACKSONVILLE, FLORIDA

---

**ANNUAL EXAMINATION SURVEY FY22**  
**30, 34, 38, 40 & 42-FOOT PROJECT**  
 STA. 43+00 THRU STA. 73+00 CUT-42  
**PLAN**

---

Scale: AS SHOWN

Drawing no.  
25

SHEET 25 OF 57





US Army Corps  
of Engineers  
Jacksonville District  
SAFETY ON THIS JOB  
DEPENDS ON YOU

NO.	SYMBOL	ZONE

DEPARTMENT OF THE ARMY  
JACKSONVILLE DISTRICT CORPS OF ENGINEERS  
JACKSONVILLE, FLORIDA

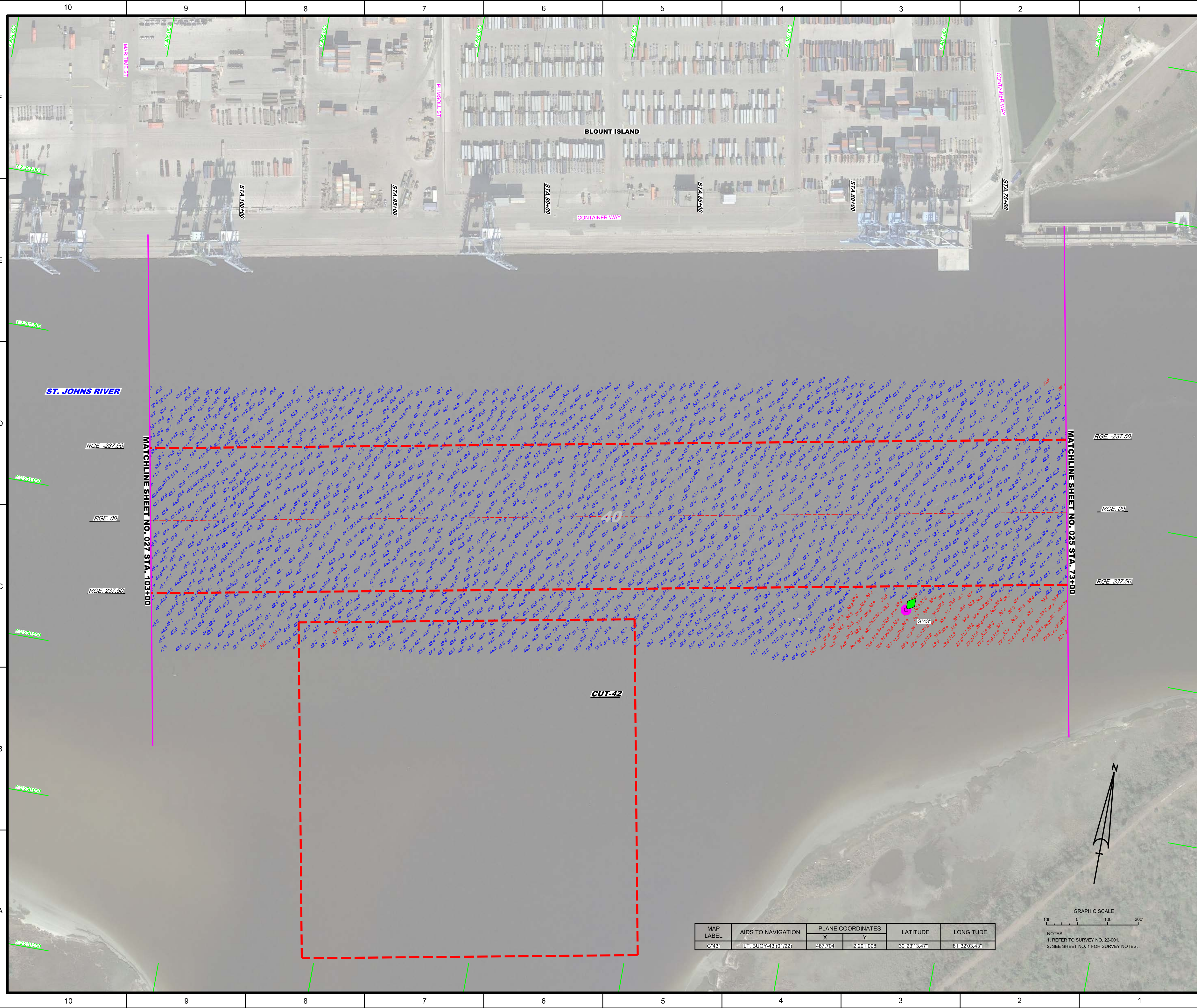
Drawn by	Checked by
WRM	GHR
WRM	
WRM	
WRM	

Drawn by: WRM  
Checked by: GHR  
Date: JAN 2022

Project Name	Project No.	Reference Note	File Name
XXXXXXXXXXXXXXXXXXXXX	22001-NAV-DCN		
XXXXXXXXXXXXXXXXXXXXX	22001-NAV-DCN		
XXXXXXXXXXXXXXXXXXXXX	22001-NAV-DCN		
XXXXXXXXXXXXXXXXXXXXX	22001-NAV-DCN		

JACKSONVILLE HARBOR, FLORIDA  
ANNUAL EXAMINATION SURVEY FY22  
30, 34, 38, 40 & 42-FOOT PROJECT  
STA. 73+00 THRU STA. 103+00 CUT-42  
**PLAN**

Scale: AS SHOWN
Drawing no.
<b>26</b>
SHEET 26 OF 57

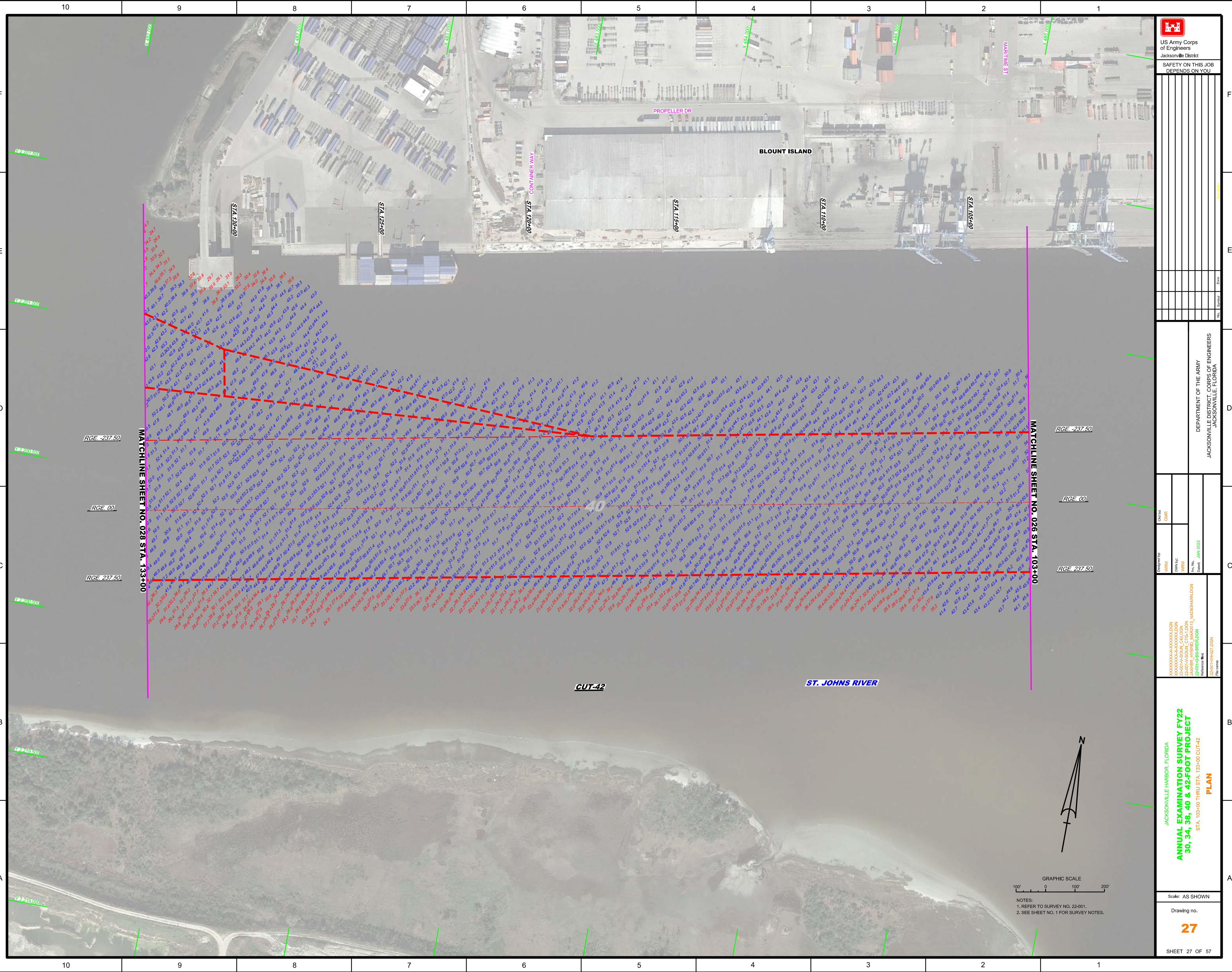


MAP LABEL	AIDS TO NAVIGATION	PLANE COORDINATES		LATITUDE	LONGITUDE
		X	Y		
G43*	LT. BUOY-43 (01/22)	487.704	2,201,098	30°23'13.47"	81°32'03.43"

GRAPHIC SCALE  
100' 0 100' 200'

NOTES:  
1. REFER TO SURVEY NO. 22-001.  
2. SEE SHEET NO. 1 FOR SURVEY NOTES.





10 9 8 7 6 5 4 3 2 1

F

E

D

C

B

A

10 9 8 7 6 5 4 3 2 1

DEPARTMENT OF THE ARMY  
JACKSONVILLE DISTRICT, CORPS OF ENGINEERS  
JACKSONVILLE, FLORIDA

Designated by: WRM  
Checked by: GHR  
Drawn by: WRM  
Title: ANNUAL EXAMINATION SURVEY FY22  
Date: JAN 2022  
Reference File: 22001H42Z7.DGN  
Project Name: ANNUAL EXAMINATION SURVEY FY22  
30, 34, 38, 40 & 42-FOOT PROJECT

JACKSONVILLE HARBOR, FLORIDA  
ANNUAL EXAMINATION SURVEY FY22  
30, 34, 38, 40 & 42-FOOT PROJECT  
ST. 103+00 THRU STA. 133+00 CUT-42  
PLAN

Scale: AS SHOWN  
Drawing no. 27  
SHEET 27 OF 57

STATIONING: STA 133+00, STA 125+00, STA 115+00, STA 110+00, STA 105+00  
RGE -237.50  
RGE 00  
RGE 237.50  
MATCHLINE SHEET NO. 028 STA. 133+00  
MATCHLINE SHEET NO. 026 STA. 103+00



GRAPHIC SCALE  
100' 0 100' 200'

NOTES:  
1. REFER TO SURVEY NO. 22-001.  
2. SEE SHEET NO. 1 FOR SURVEY NOTES.

RGE -237.50  
RGE 00  
RGE 237.50

CUT-42

ST. JOHNS RIVER

PROPELLER DR

BLOUNT ISLAND

CONTAINER WAY

MATCHLINE SHEET NO. 028 STA. 133+00

MATCHLINE SHEET NO. 026 STA. 103+00

STA 130+00

STA 125+00

STA 120+00

STA 115+00

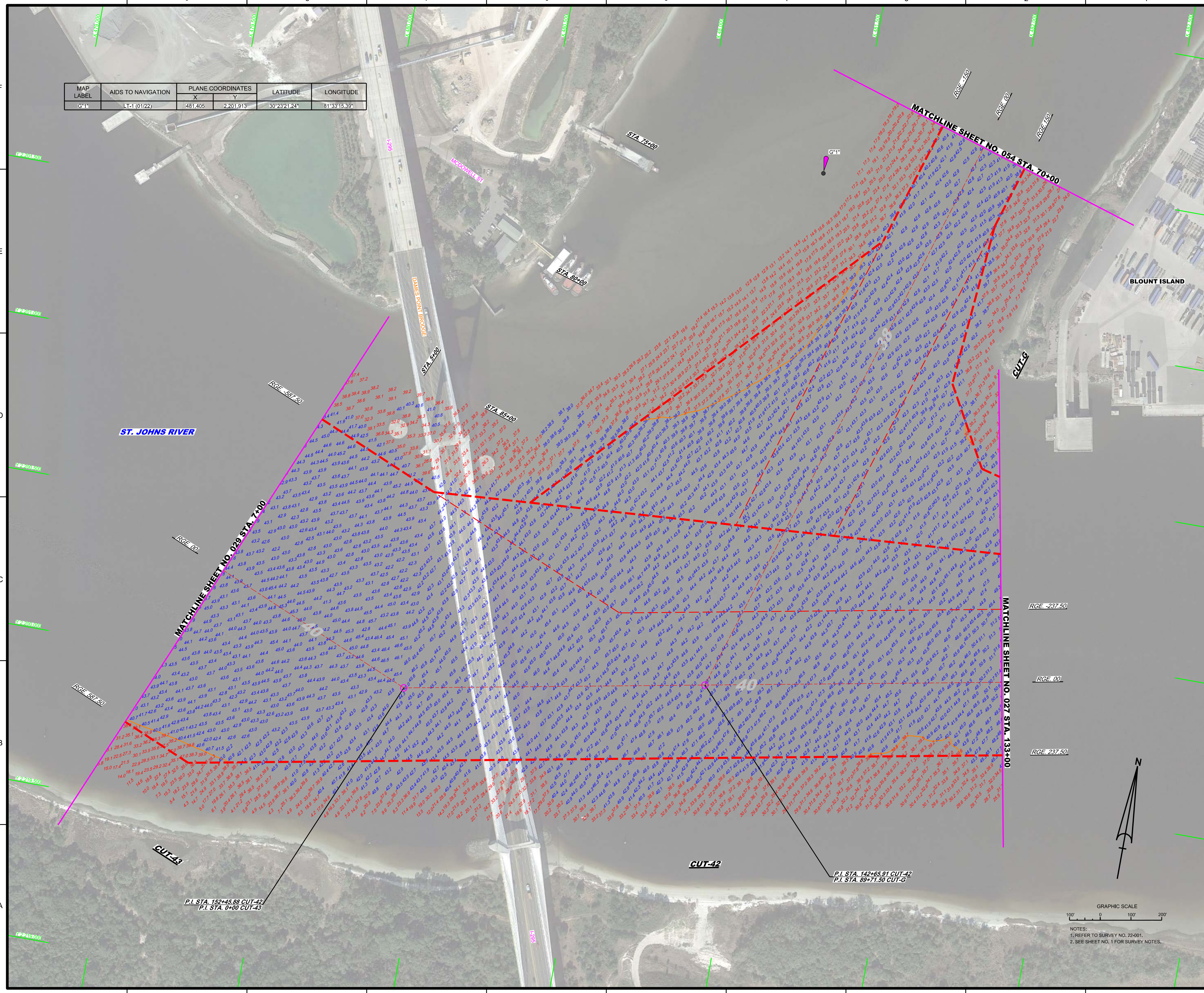
STA 110+00

STA 105+00

Red dashed line representing a proposed roadway with stationing labels (e.g., STA 133+00, STA 125+00, etc.) and elevation markers. The line is accompanied by a grid of numerical values representing elevation data for the survey area.



MAP LABEL	AIDS TO NAVIGATION	PLANE COORDINATES		LATITUDE	LONGITUDE
		X	Y		
G+1	LT-1 (01/22)	481,405	2,201,913	30°23'21.24"	81°33'15.33"



DEPARTMENT OF THE ARMY  
JACKSONVILLE DISTRICT, CORPS OF ENGINEERS  
JACKSONVILLE, FLORIDA

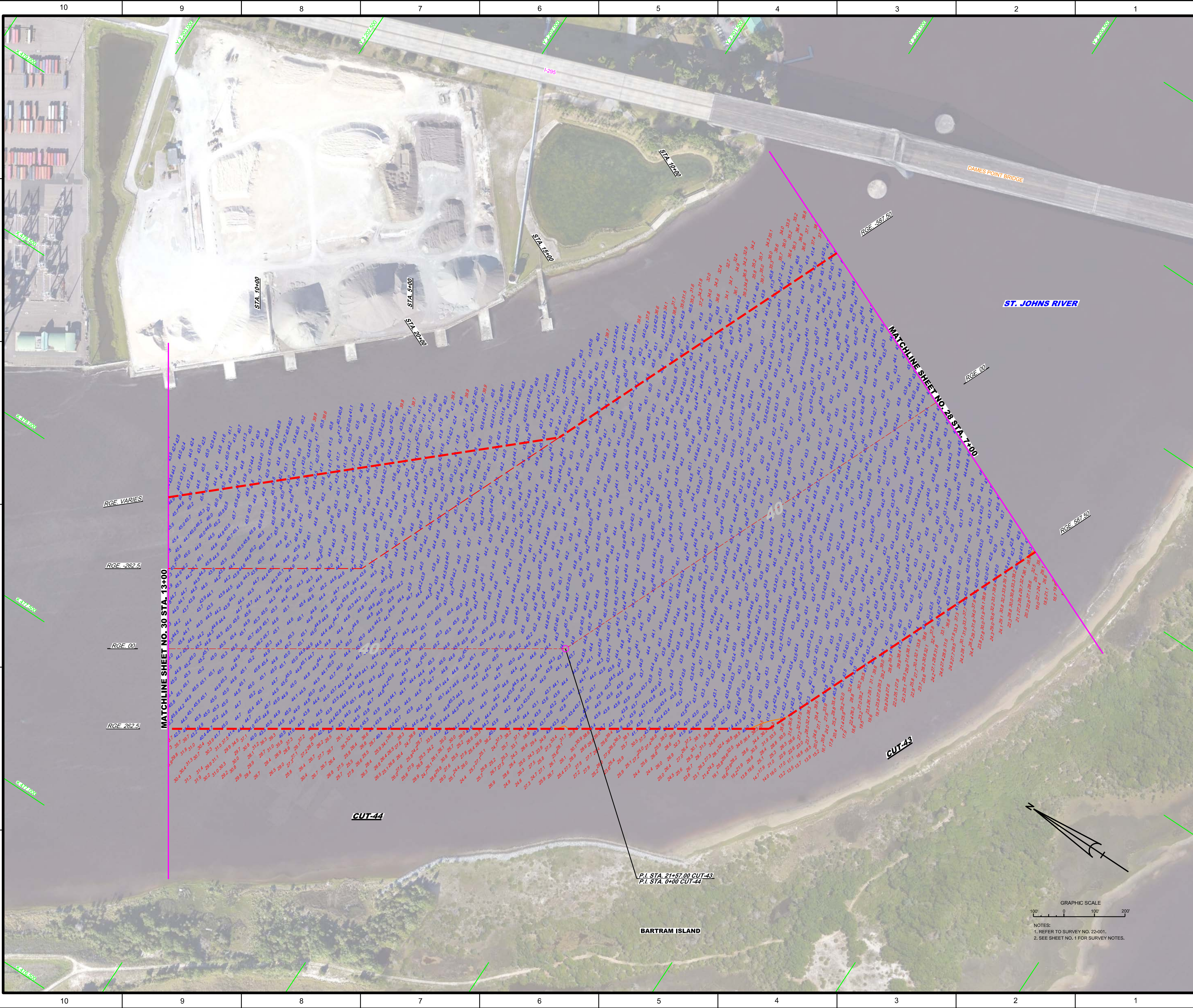
Checked by: GHR  
Designed by: WRM  
Drawn by: WRM  
Reference files: 22001HARV.DGN, 22001HARCON.DGN, 22001HARCON\_CUT4.DGN, 22001HARCON\_CUT43.DGN, 22001HARCON\_CUT42.DGN, 22001HARCON\_CUT43.DGN, 22001HARCON\_CUT43.DGN, 22001HARCON\_CUT43.DGN  
Reference files: 22001HARV.DGN, 22001HARCON.DGN, 22001HARCON\_CUT4.DGN, 22001HARCON\_CUT43.DGN, 22001HARCON\_CUT42.DGN, 22001HARCON\_CUT43.DGN, 22001HARCON\_CUT43.DGN  
Date: JAN 2022

ANNUAL EXAMINATION SURVEY FY22  
30, 34, 38, 40 & 42-FOOT PROJECT  
STA. 133+00 CUT-42 THRU STA. 7+00 CUT-43 AND  
STA. 70+00 THRU STA. 68+75.00 CUT-G  
PLAN

JACKSONVILLE HARBOR, FLORIDA

NOTES:  
1. REFER TO SURVEY NO. 22-001.  
2. SEE SHEET NO. 1 FOR SURVEY NOTES.





 US Army Corps of Engineers Jacksonville District <b>SAFETY ON THIS JOB DEPENDS ON YOU</b>	
Drawn by: <b>WRM</b> Check by: <b>GHR</b>	Date: <b>JAN 2022</b>
Project: <b>22001HAR02L00N</b> Location: <b>JACKSONVILLE, FLORIDA</b>	Drawing No.: <b>29</b>
Title: <b>ANNUAL EXAMINATION SURVEY FY22</b> <b>30, 34, 38, 40 &amp; 42-FOOT PROJECT</b> STA. 7+00 CUT-43 THRU STA. 13+00 CUT-44 <b>PLAN</b>	Sheet: <b>29 OF 57</b>

GRAPHIC SCALE  
 1" = 100'  
 0 100' 200'

NOTES:  
 1. REFER TO SURVEY NO. 22-001.  
 2. SEE SHEET NO. 1 FOR SURVEY NOTES.

P.I. STA. 21+57.00 CUT-43  
 P.I. STA. 0+00 CUT-44

BARTRAM ISLAND

MATCHLINE SHEET NO. 30 STA. 13+00

MATCHLINE SHEET NO. 28 STA. 7+00

RGE VARIES  
 RGE -262.5  
 RGE 0.0  
 RGE 262.5

CUT-44

CUT-43

ST. JOHNS RIVER

DAMES POINT BRIDGE

STA. 0+00

STA. 5+00

STA. 10+00

STA. 20+00

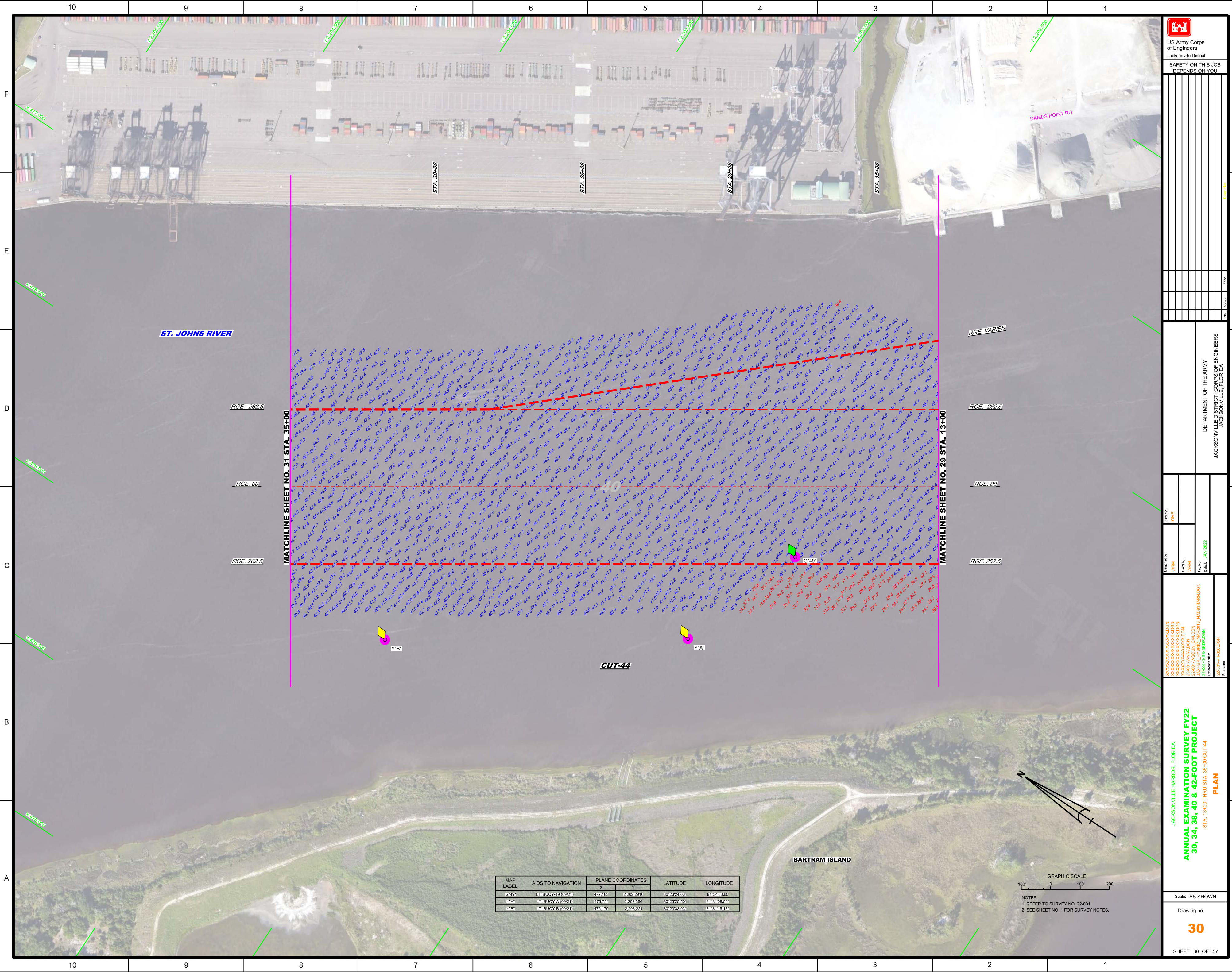
RGE -597.90

RGE 0.0

RGE 637.50







ST. JOHNS RIVER

DAMES POINT RD

MATCHLINE SHEET NO. 31 STA. 35+00

MATCHLINE SHEET NO. 29 STA. 13+00

RGE. -262.5

RGE. VARIES

RGE. 00

RGE. 00

RGE. 262.5

RGE. 262.5

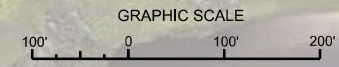
CUT-44

Y'B

Y'A

BARTRAM ISLAND

MAP LABEL	AIDS TO NAVIGATION	PLANE COORDINATES		LATITUDE	LONGITUDE
		X	Y		
G-49	Lt. BUOY-49 (0924)	477,883	2,202,236	30°26'24.03"	81°34'03.50"
Y'A	Lt. BUOY-A (0924)	476,751	2,202,366	30°26'25.50"	81°34'08.56"
Y'B	Lt. BUOY-B (0924)	476,179	2,203,221	30°26'33.03"	81°34'15.16"



NOTES:  
1. REFER TO SURVEY NO. 22-001.  
2. SEE SHEET NO. 1 FOR SURVEY NOTES.

**US Army Corps of Engineers**  
Jacksonville District

SAFETY ON THIS JOB  
DEPENDS ON YOU

---

DEPARTMENT OF THE ARMY  
JACKSONVILLE DISTRICT, CORPS OF ENGINEERS  
JACKSONVILLE, FLORIDA

---

ANNUAL EXAMINATION SURVEY FY22  
30, 34, 38, 40 & 42-FOOT PROJECT  
STA. 13+00 THRU STA. 35+00 CUT-44  
**PLAN**

---

Scale: AS SHOWN

Drawing no.  
**30**

SHEET 30 OF 57